

## UNIVERSITY OF TEXAS AT EL PASO

El Paso, TX | Founded 1914 | 421 Acres | 18,237 Total Student FTE | 43 Students per Acre

<b>CENTENNIAL PLAZA</b> Open Space Established 2015 Open Space Size 175,000 GSF	<b>Adjacent Uses</b> Academic, Administration	<b>Open Space Fun Fact</b> UTEP received a 2016 US Green Building Council SITES Silver Certification.	<b>Sustainability Strategy</b> The total capacity of the stormwater features is 565,370 gallons per day or 75,579 cubic feet, which exceeds the 95th percentile storm event.
---	--	--	---

AYERS  
SAINT  
GROSS

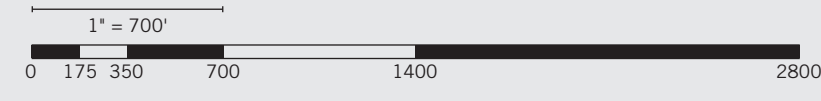
# 2021

## COMPARING CAMPUSES

### Open Spaces

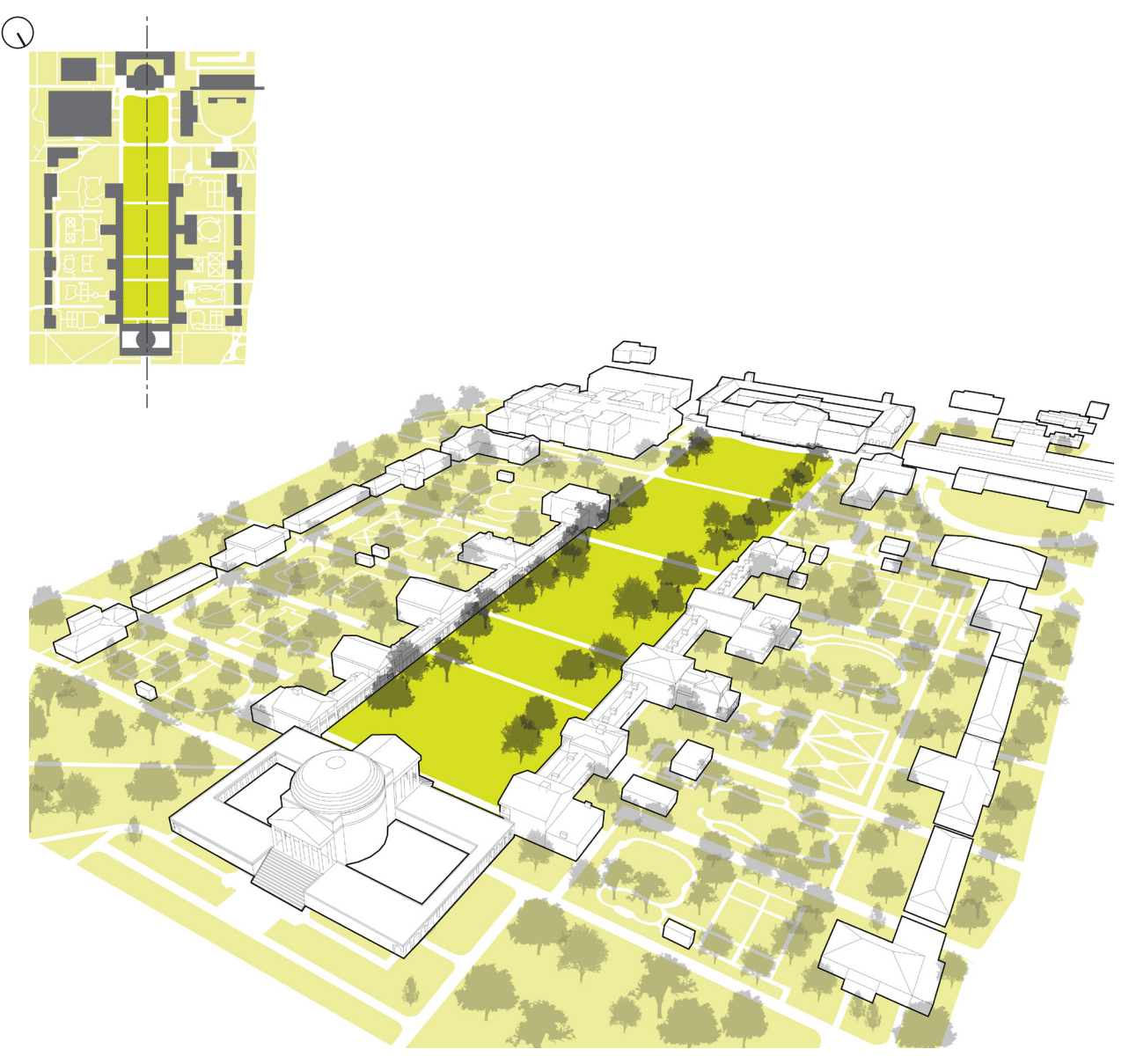
Campus landscapes are an integral part of the collegiate experience. They are the places where friends meet before and after class, the green where a blanket is laid down to study outside on the first sunny day of spring, the perfect tree to sit beneath between classes. Our experiences on campuses are formed not just by the time we spend in buildings but equally by the time we spend outside and immersed in the campus landscape. It is in the open spaces where many of the defining memories and moments of the campus experience happen.

Our 2021 Comparing Campuses poster celebrates campus open spaces and the critical role they play in the collegiate experience. Varying in scale, geography, form, and vegetation, each campus landscape highlighted is a signature open space that is a defining part of its campus.



www.ayerssaintgross.com - 410-347-8500 - comparingcampuses@ayerssaintgross.com

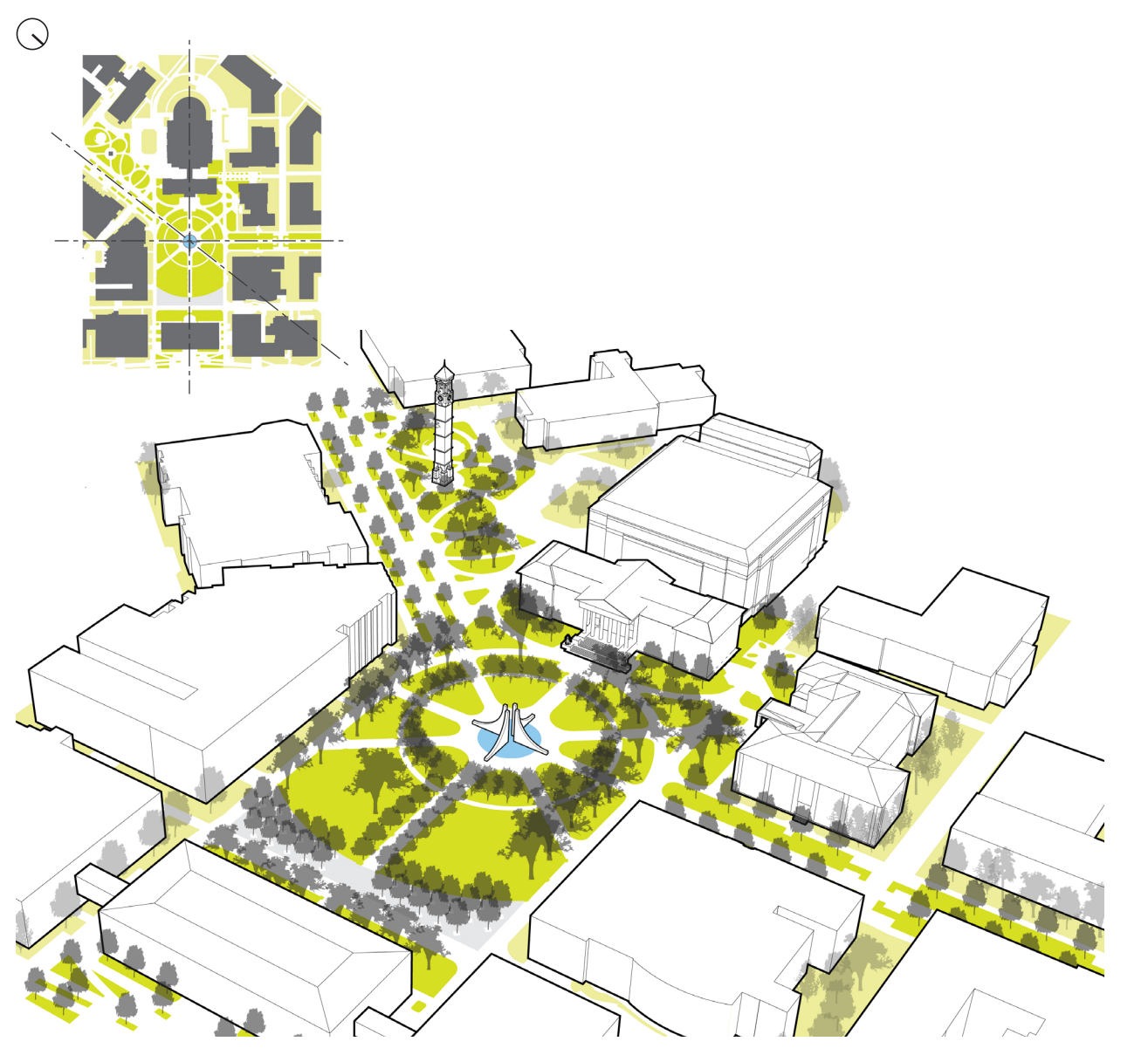
*Our thanks to the colleges and universities that provided maps and information. All campus plans have been graphically reproduced to the same approximate scale and are intended for comparative use only. Recognizing that errors are inevitable, we apologize for any inaccuracies.*  
**Concept**—Jim Wheeler, **Graphic Design**—Mindy Dulin, Charlie Francis, Angi Kwak, Kevin Marino, Mangani Smith,  
**Content**—Andrew Casavant, Ashwin Dharmadhikari, Amanda Hodgson, Brian Kininger, Mike McGrain, Nakia Neves,  
 Mallory Payne, Chiana Gil Perez, Corey Rothemel, Annelie Schultz. Copyright 2021 Ayers Saint Gross.



## UNIVERSITY OF VIRGINIA

Charlottesville, VA | Founded 1819 | 1,200 Acres | 22,527 Total Student FTE | 19 Students per Acre

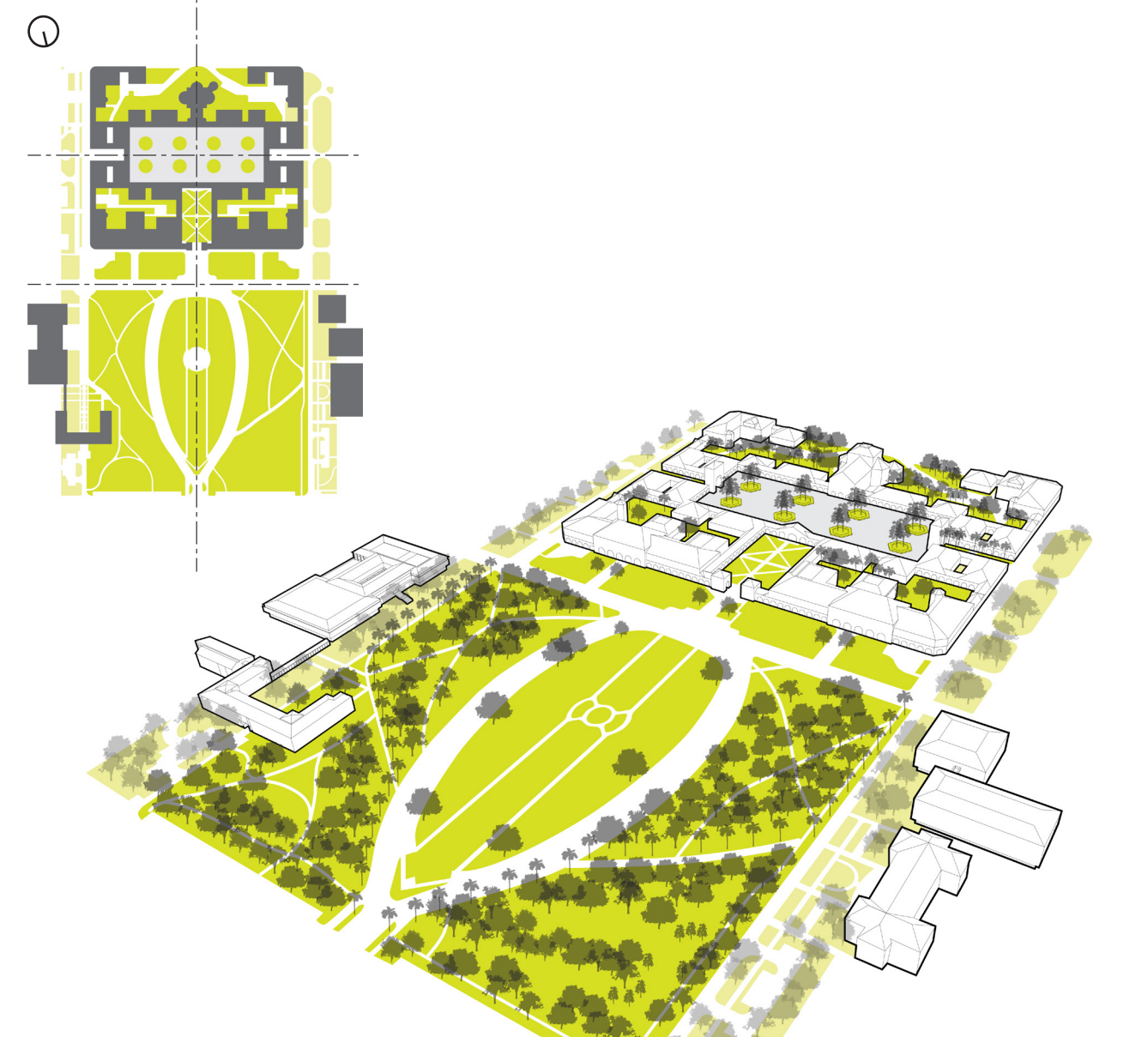
<b>THE LAWN</b> Open Space Established 1817 Open Space Size 200,000 GSF	<b>Adjacent Uses</b> Academic, Residential, Library	<b>Open Space Fun Fact</b> Designed by Thomas Jefferson, The Lawn is listed on the National Register of Historic Places and is classified as a UNESCO World Heritage Site.	<b>Sustainability Strategy</b> UVa hopes to reduce water use by 30%, reduce their nitrogen footprint by 30%, be fossil fuel-free, and carbon neutral by 2030.
---	--	---	--



## PURDUE UNIVERSITY

West Lafayette, IN | Founded 1869 | 2,972 Acres | 42,632 Total Student FTE | 14 Students per Acre

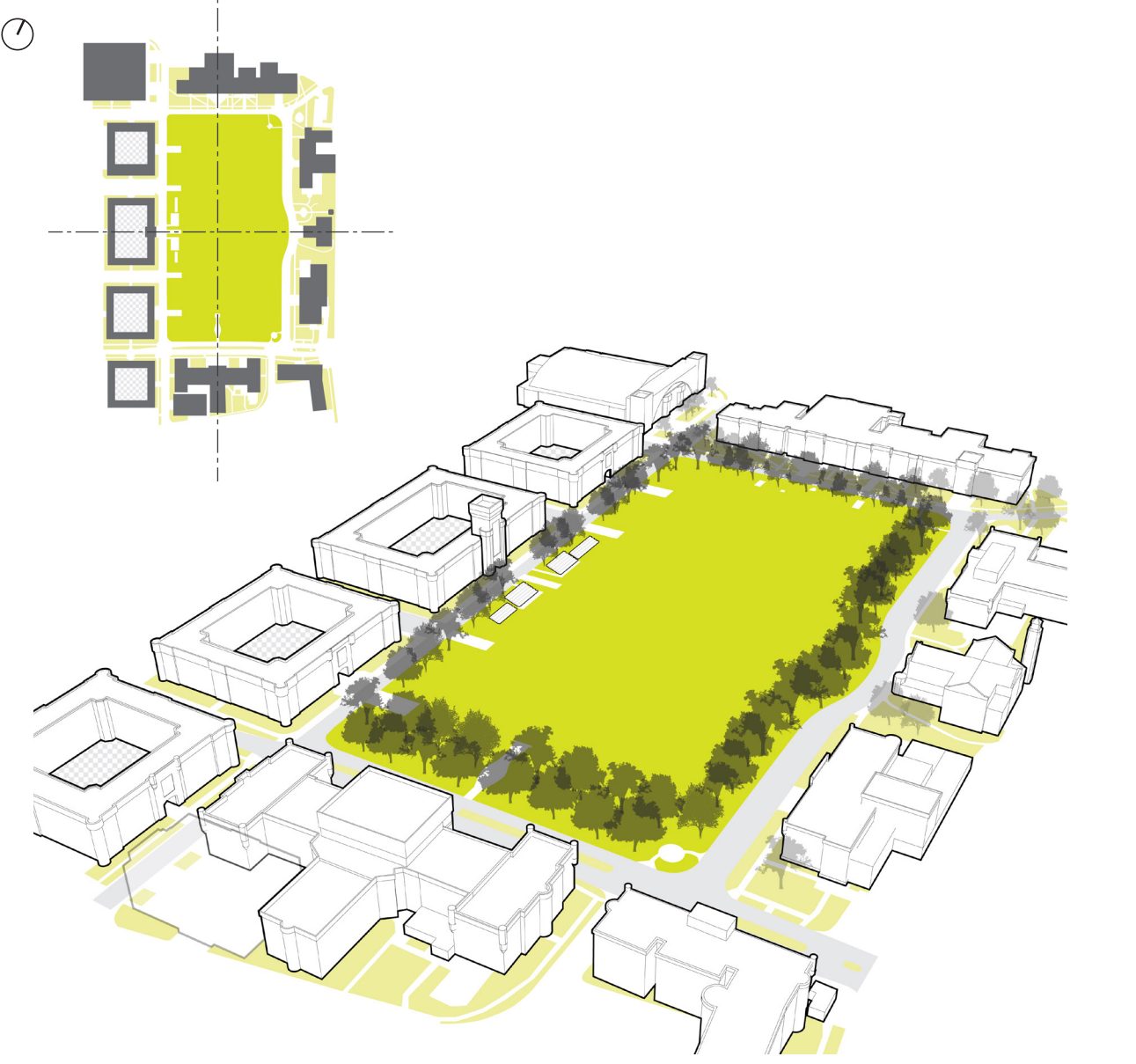
<b>PURDUE MALL</b> Open Space Established 1928 Open Space Updated 1988 Open Space Size 200,500 GSF	<b>Adjacent Uses</b> Academic, Administration	<b>Open Space Fun Fact</b> Running through the Purdue Mall Fountain as part of a "Fountain Run" is considered a rite of passage for many Purdue students.	<b>Sustainability Strategy</b> The 2020 Sustainability Master Plan prioritizes open space and includes the goals of planting 3,700+ trees and doubling bicycle infrastructure by 2024.
---	--	--	---



## STANFORD UNIVERSITY

Stanford, CA | Founded 1891 | 1,337 Acres | 18,000 Total Student FTE | 14 Students per Acre

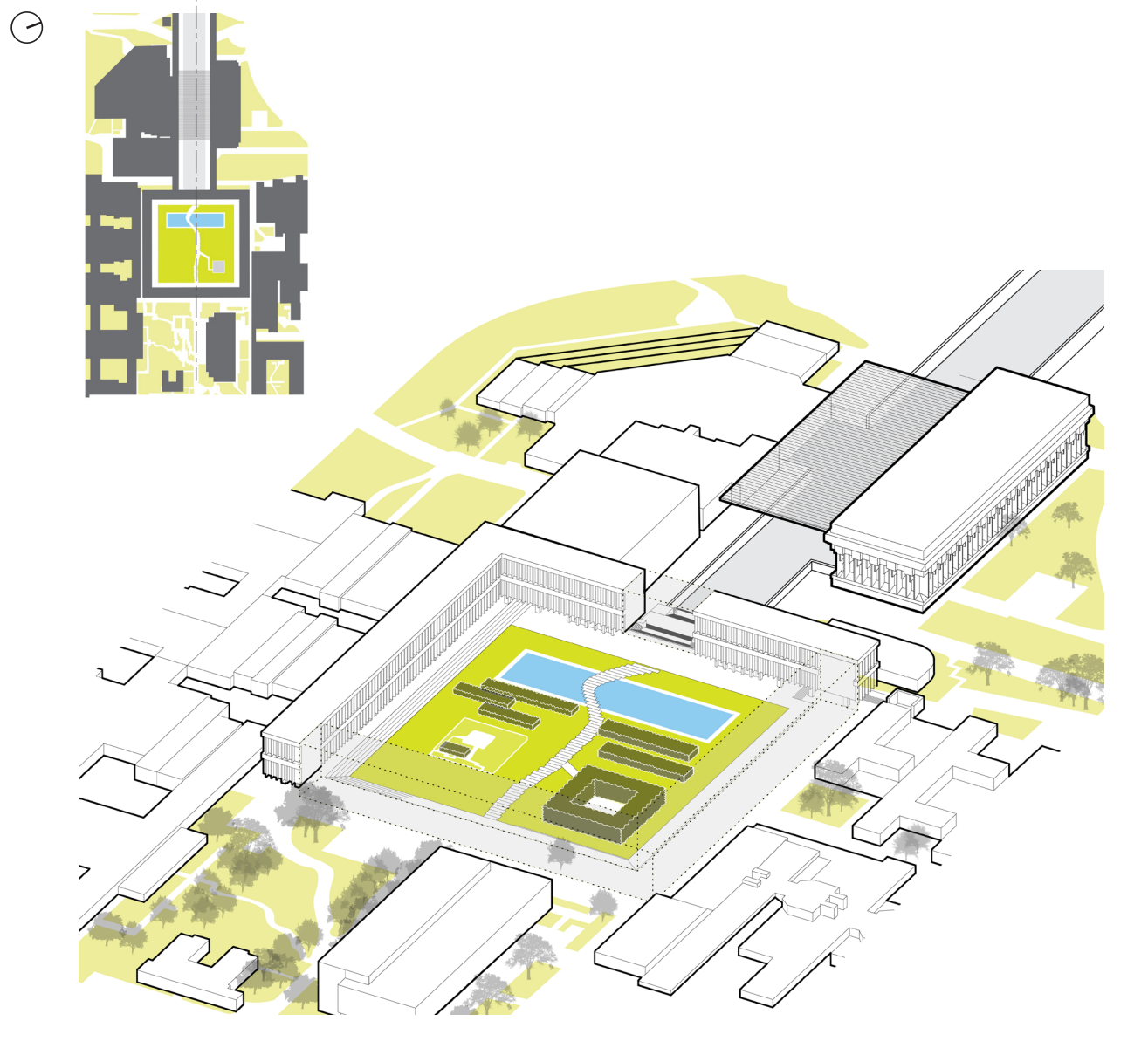
<b>INNER ARBORETUM, THE OVAL, &amp; MAIN QUAD</b> Open Space Established 1891 Open Space Size 1,440,000 GSF	<b>Adjacent Uses</b> Academic, Research, Library, Church, Museum	<b>Open Space Fun Fact</b> The open space was originally planned by Fredrick Law Olmstead and is designed for events such as Kissing on the Quad and Commencement.	<b>Sustainability Strategy</b> Stanford is a Sains Platinum University that will achieve 80% carbon neutrality by 2025.
---	---	---	--



## THE CITADEL

Charleston, SC | Founded 1842 | 392 Acres | 4,461 Total Student FTE | 12 Students per Acre

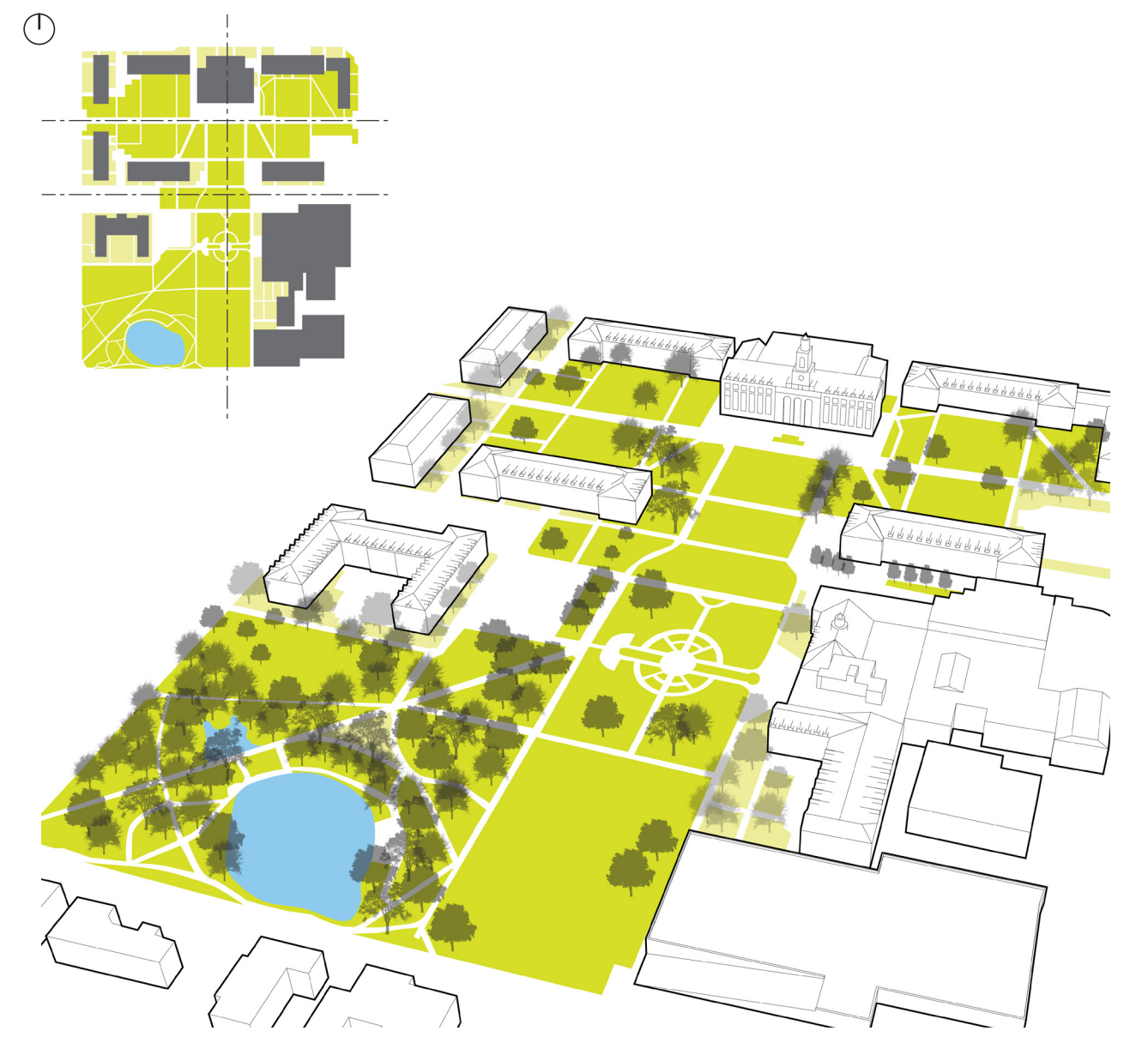
<b>SUMMERALL FIELD</b> Open Space Established 1922 Open Space Size 435,600 GSF	<b>Adjacent Uses</b> Academic, Residence Life and Housing, Student Space	<b>Open Space Fun Fact</b> The parade ground features monuments honoring the contributions of Citadel alumni to the military including vintage missiles, fighter jets, tanks, and armored vehicles.	<b>Sustainability Strategy</b> The Citadel prioritizes native plantings to add biodiversity and climate resilience to their campus ecosystem.
--	---	--	--



## SIMON FRASER UNIVERSITY

Burnaby, British Columbia | Founded 1964 | 430 Acres | 27,265 Total Student FTE | 63 Students per Acre

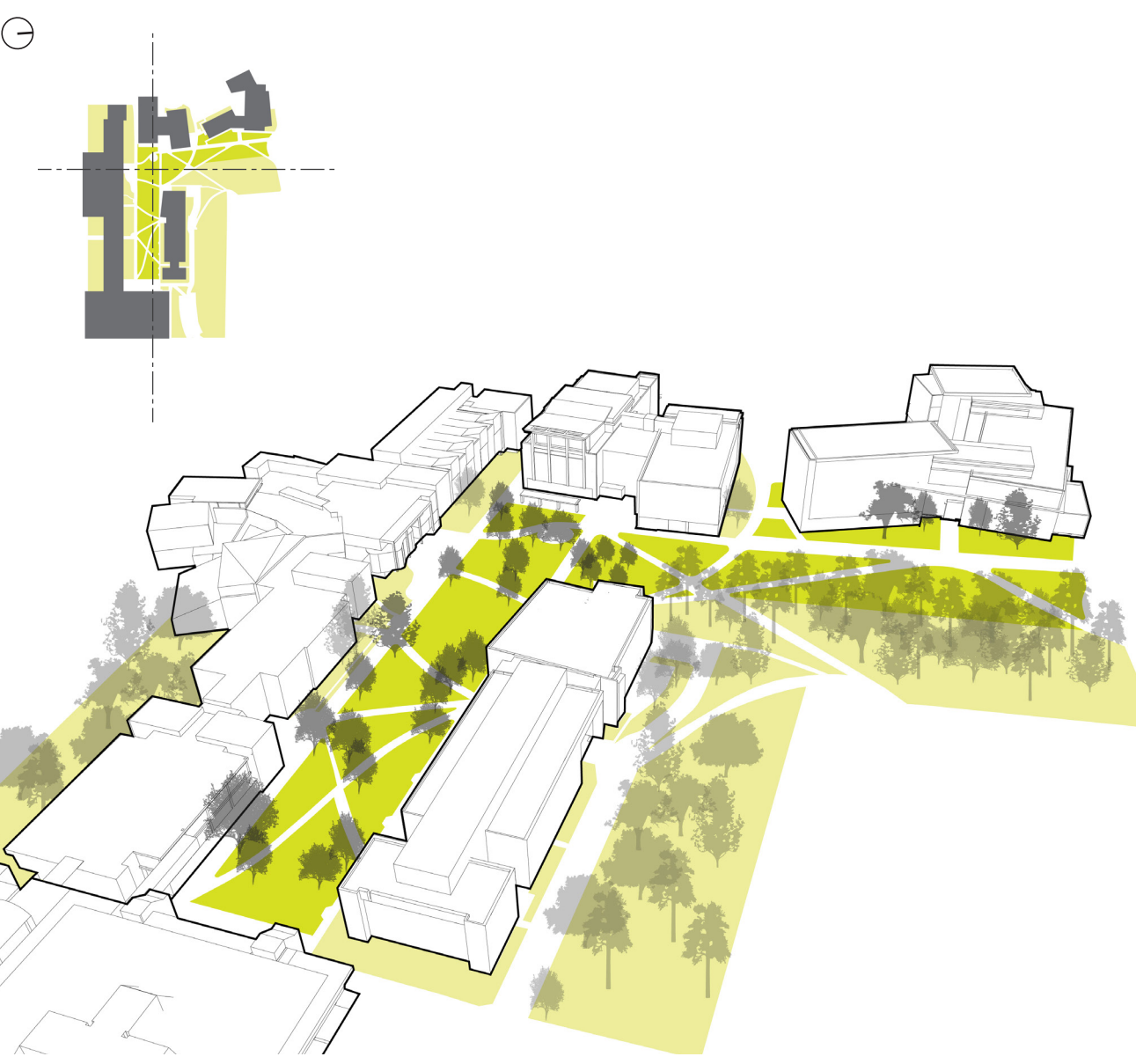
<b>ACADEMIC QUADRANGLE COURTYARD</b> Open Space Established 1965 Open Space Size 91,380 GSF	<b>Adjacent Uses</b> Academic, Student Space, Observatory, Museum, Cultural and Community Space	<b>Open Space Fun Fact</b> Offering varied views, the open space features a reflection pond with bridge crossing and jade boulder, an Indigenous canoe, a heather mound, bosque of trees, and public art.	<b>Sustainability Strategy</b> Bill Reid's Haida Canoe honors Indigenous peoples and marks SFU's location on unceded lands while pursuing Reconciliation.
---	--	--	--



## OKLAHOMA STATE UNIVERSITY

Stillwater, OK | Founded 1890 | 1,489 Acres | 17,727 Total Student FTE | 12 Students per Acre

<b>LIBRARY LAWN, FORMAL GARDENS, AND THETA POND</b> Open Space Established 1922 Open Space Updated 1947, 1953 Open Space Size 622,105 GSF	<b>Adjacent Uses</b> Library, Student Space, Hotel	<b>Open Space Fun Fact</b> The Library Lawn hosts events from the famous Homecoming Walkaround to an annual Veteran's Day memorial that features over 7,000 American flags.	<b>Sustainability Strategy</b> Oklahoma State University is a recognized Tree Campus USA for its continued efforts to maintain sustainable campus forestry.
--	---	--	--



## HOWARD COMMUNITY COLLEGE

Columbia, MD | Founded 1970 | 120 Acres | 2,645 Total Student FTE | 22 Students per Acre

<b>QUAD</b> Open Space Established 1991 Open Space Updated 2003 Open Space Size 140,000 GSF	<b>Adjacent Uses</b> Academic, Student Space, Student Support	<b>Open Space Fun Fact</b> HCC earned the 2020 People Loving and Nurturing Trees (PLANT) Gold Award from the Maryland Department of Natural Resources through their campus stewardship.	<b>Sustainability Strategy</b> HCC's quad features native plantings, micro-orientation stormwater systems, and is framed by a preserved existing forest.
--	--	--	---

# Past, Present, and Future

Historically, open spaces were designed to support the activities of the campus. These spaces held celebrations and rites of passage like convocation and commencement, and even the first sporting events. Open spaces were always designed to support both meaningful personal experience and community building.

Today, campus landscapes still hold the role of campus meeting space, but have evolved to respond to the ever-changing community and world in which we reside. Necessary attention has been placed on adapting these spaces to be more than just places to move through, but places to stop and gather, places that are welcoming and equitable to all. Of equal importance, campus landscapes are vital to the integration of new sustainable technologies that help address the challenges facing our world.

This past year has reinforced the value of exterior spaces, biophilia, and the ability to lose yourself in nature. Although only time will determine the campus landscapes of the future, the value of open spaces and the positive impacts they have on the collegiate experience are undeniable.

## SUSTAINABLE SOLUTIONS

Green infrastructure, bioswales, and permeable pavers to reduce stormwater runoff

Solar capture on site as a renewable energy source

Water capture and reuse for building and irrigation needs

Sustainable maintenance practices

Native and drought tolerant species that naturally thrive in their environment

Robust plantings that embrace carbon sequestration

## EQUITABLE SPACE

Spaces that are programmed and designed to be welcoming to all

Universally accessible spaces that integrate one set of design solutions for all users

Flexible in scale, use, and furnishings to adapt to evolving needs over time

Collaboration spaces to strengthen community and connections

Reflecting a broader perspective in the telling of history and celebration of place

Connection to nature that promotes wellbeing and moments to recharge